

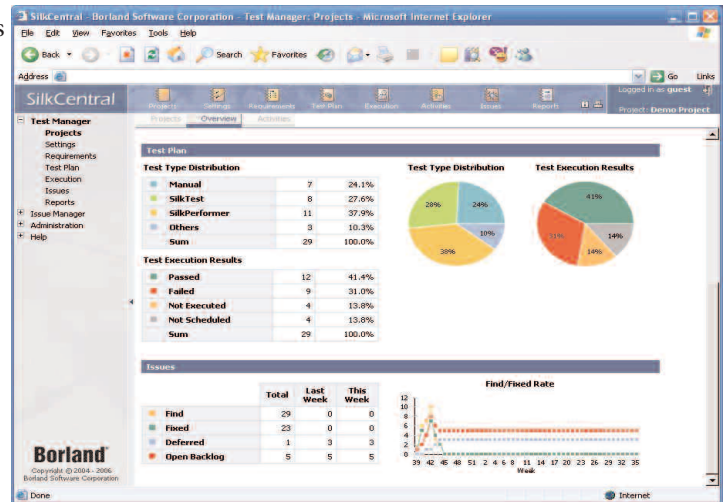


# Borland® SilkCentral® Test Manager

Web-based Software Test Management

MANAGE DISTRIBUTED TEST ENVIRONMENTS AND THE ENTIRE TEST PROCESS  
WITH A SINGLE, POWERFUL TOOL

Borland® SilkCentral® Test Manager is a single, enterprise-class Web-based solution for managing the entire application testing process—from incorporating end-user requirements and specifications, to planning, scheduling and executing tests, to tracking and resolving issues. A central repository serves as the foundation for the entire quality process, enabling access to all application requirements, specifications, test plans, quality metrics, test results and reports. Meanwhile, a Web portal provides anytime, anywhere access to comprehensive project information through a number of standard views. As a result, SilkCentral Test Manager promotes collaboration among quality assurance, development and line-of-business managers; improves quality by providing clear visibility into the testing process; and creates new efficiencies that shorten release cycles and raise the bar for software quality.



*Project overview summary delivers the right information to the right people.*

## FEATURES AND BENEFITS

### WEB-BASED QUALITY REPORTING

SilkCentral Test Manager provides stakeholders in the software delivery cycle with web-based access to the project-related information they need, when they need it. Management gains high-level visibility into the testing process and progress against the overall plan, and test teams and developers can view in-depth reports containing granular-level detail. Choose from an array of built-in reports covering the entire testing process—or create custom reports to meet specific reporting needs.

### TEST REQUIREMENTS MANAGEMENT

By integrating with Borland CaliberRM™, Microsoft® Office and third-party requirements management technologies, SilkCentral Test Manager lets you import requirements into a central repository. Once requirements are uploaded, you can easily link them to their respective test cases. By capturing a history of requirements, including modifications, SilkCentral Test Manager enables you to quickly determine the impact of changes on your test plan and overall release schedule.

### TEST PLANNING

SilkCentral Test Manager lets you quickly create a test plan and easily associate test cases to the plan. One test plan can cover all types of tests for the platforms, environments and technologies to be tested, as well as all levels of testing. The plan can also integrate both manual and automated, unit, functional and load tests—providing a unified view of the overall test environment. As you grow with the system, and store more test plans, test and test data in SilkCentral, versioning and access control is provided through integration with Borland® StarTeam®

### TEST EXECUTION

Through its Web portal, SilkCentral Test Manager lets you schedule and execute all tests in your plan from a centralized location—even when testing activity is distributed across remote labs. From a single test script, simultaneously schedule and run multiple tests covering different browsers, operating systems and environments, in multiple locations. In addition, you can automatically rerun these tests as new builds become available. As each test is completed, results are stored in a central repository for shared, Web-based access.

# Borland® SilkCentral® Test Manager

## FEATURES AND BENEFITS (Continued)

### ISSUE MANAGEMENT

SilkCentral Test Manager includes a web-based issue tracking tool that automatically records defects, tracks their status, and monitors resolution. Requirements can be linked to a specific defect, ensuring traceability throughout the application lifecycle, helpful for compliance and auditing. An easily customized process workflow allows consistent and efficient assignment of tasks and critical information to the right personnel, at the right time. When and if you would like to leverage expanded capabilities of enterprise Software Configuration Management systems, SilkCentral is tightly integrated with Borland's StarTeam as well as other popular defect tracking systems.

### BUILT FOR ENTERPRISE SCALABILITY

Based on the Borland SilkCentral Common Architecture (SCA), SilkCentral Test Manager is designed as a single platform to meet all your enterprise testing needs. Naturally, SilkCentral seamlessly integrates with Borland's capable Silk testing tools, but the open architecture of SilkCentral can also interface with other vendors' testing tools to provide one central point of control for the overall test environment. The SilkCentral open API enables you to extend the functionality to other defect tracking, requirements and source control solutions.

### CLEAR VISIBILITY INTO THE TESTING PROCESS

As the complexity of enterprise applications grow, so does the pressure to deliver them on time and on budget while meeting rigorous design specifications and quality requirements. With SilkCentral Test Manager, you can manage application quality and accelerate time-to-market—even when applications integrate diverse components, technologies and platforms across a global computing environment.

SilkCentral Test Manager provides answers to critical questions such as:

- Are we confident that the application is ready for release?
- Have all high-priority requirements been tested?
- What is the quality trend of the Application Under Test (AUT)?
- How much of the application have we covered in our test plan?

### IMPROVED TESTING EFFICIENCY AND FASTER TIME-TO-MARKET

SilkCentral Test Manager lets you maximize resources to accelerate the testing cycle. It enables you to schedule automated tests that can run unattended on a 24/7 basis. SilkCentral Test Manager also allows users to manage all types of tests—automated or manual, functional, unit or performance—from one test plan. In addition, it ensures the testing effort is focused on the right version of the AUT through integration with source control tools.

## SYSTEM REQUIREMENTS

### OPERATING SYSTEM

- Microsoft Windows® 2003, Windows XP, Windows 2000 (SP2 or later) or Windows NT® (SP5 or later, SP6a recommended)\*

\* Windows NT supported only for SilkCentral Test Manager execution servers.

### HARDWARE

- Front-end server or application server
  - Intel® Pentium® processor with minimum of 1 GHz, 512 MB RAM (2 GHz with 1 GB RAM recommended)
- Chart server or execution server
  - Intel® Pentium® processor with minimum of 600 MHz, 256 MB RAM (1 GHz with 512 MB RAM recommended)

### SUPPORTED ENVIRONMENTS

- Browser
  - Microsoft Internet Explorer 5.5 or later
  - Mozilla® Firefox® 1.0 or later
- Database
  - Microsoft SQL Server 2000, Microsoft SQL Server 2000 Desktop Engine (MSDE 2000)
  - Oracle® 9i and 10g
- Web server
  - Caucho Resin® (included)
  - Microsoft Internet Information Services (IIS) 5.x and 6 (optional)

## ABOUT BORLAND

Borland Software Corporation is the global leader in platform independent solutions for Software Delivery Optimization. The company provides the software and services that align the people, process, and technology required to maximize the business value of software.



[www.borland.com](http://www.borland.com)

Copyright © 2006 Borland Software Corporation. All rights reserved. All Borland brand and product names are service marks, trademarks or registered trademarks of Borland Software Corporation in the United States and other countries. All other marks are the property of their respective owners. 24969